

# Nlyte ASF HPE Asset Manager Connector

Track and manage changes through every stage of the IT lifecycle

## DATA SHEET

The HPE Asset Manager (HPEAM) Software Asset Management module leverages best practices to help your organization reduce software expenses and manage risk more effectively. It enables your organization to automate the most common software management processes. Furthermore, it provides a straightforward, standardized and proactive way to manage contracts, entitlements, licenses, state of compliance and more.

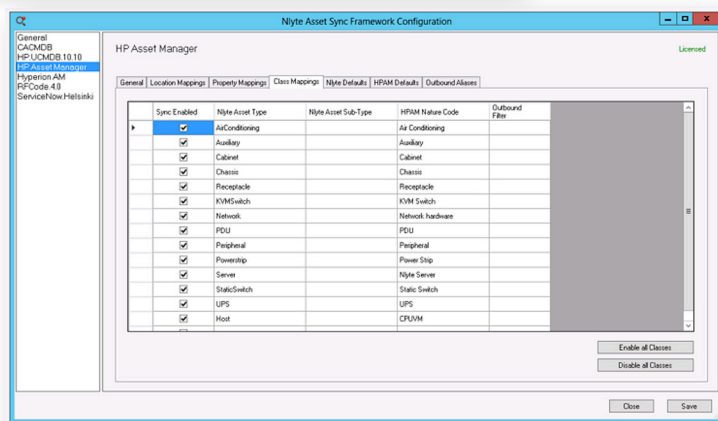
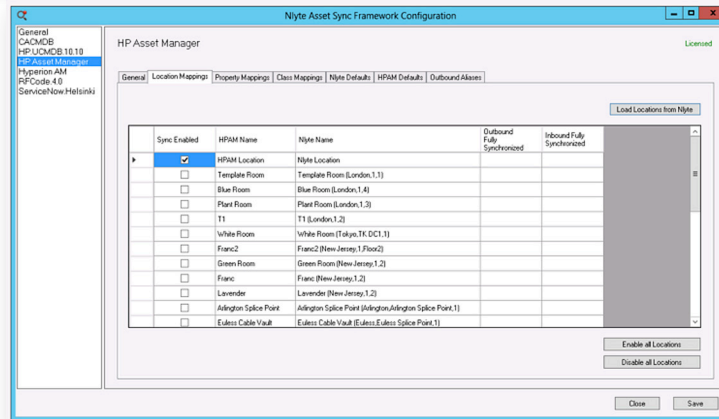
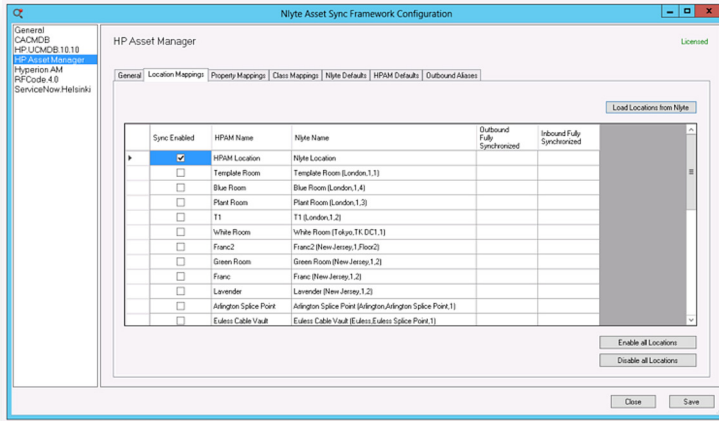
The Nlyte ASF HPE Asset Manager Connector now enables your organization to take it a step further and

synchronize assets between Nlyte and HPEAM. This connector functions similarly to the existing Nlyte CMDB connectors in synchronizing assets between Nlyte and HPE.

With the Nlyte ASF HPE Asset Manager Connector, you can now configure bi-directional synchronization of Active Operational assets between Nlyte and your instance of HPEAM. You can easily specify the direction of the synchronization (master/child) on an individual property level.

- 
- Reduce software costs through the use of HPE AM's powerful reconciliation system
  - Enable software compliance
  - Manage entitlement and usage
  - Facilitate complex software license type management
  - Enable usage tracking and reconciliation to allow for greater cost savings
  - Use compliance data to enhance resource allocations and to improve business performance
  - Create a new asset in HPEAM and copy the matched asset properties for assets in Nlyte with no corresponding asset in HPEAM during outbound synchronizations
  - Update any changed properties or relationships in HPEAM for assets in Nlyte with a matched asset in HPEAM during outbound synchronizations
  - Create a new asset in Nlyte and copy the matched asset properties for assets in HPEAM with no corresponding asset in Nlyte during inbound synchronizations
  - Update any changed properties or relationships in Nlyte for assets in HPEAM with a matched asset in Nlyte during inbound synchronizations

# Nlyte ASF HPE Asset Manager Connector



## FOR MORE INFORMATION

- Contact Us: [info@nlyte.com](mailto:info@nlyte.com)
- Visit Us: [www.nlyte.com](http://www.nlyte.com)

Nlyte is a registered trademark and Nlyte Software is a trademark of Nlyte Software Limited. All other brands or products names are the property of their respective holders. Information in this document is subject to change without notice and does not represent a commitment on the part of the vendor.

Copyright ©2017 Nlyte Software limited. All rights reserved.

## About Nlyte

Founded in 2004, Nlyte Software is recognized as the industry leading data center infrastructure management (DCIM) solution provider. Nlyte's DCIM provides unmatched functionality that supports all data center processes across the entire "dock to decom" lifecycle. With a 98% customer retention rate, Nlyte's DCIM solution is used by many of the world's largest and most sophisticated data centers, as well as many small and medium sized organizations. Customers can quickly deploy the Nlyte DCIM solution and begin to immediately enjoy reduced costs and increased efficiency across all data center processes. For more information, visit [www.nlyte.com](http://www.nlyte.com) or follow [@nlyte](https://twitter.com/nlyte) on Twitter.